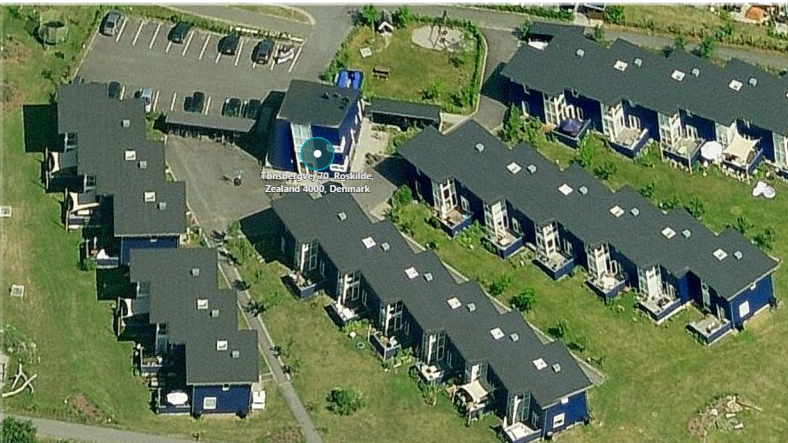


BF Absalon's Have (Roskilde, Denmark)



Top left: Aerial view of the community. **Source:** Bing Maps 3D, 2015;
Top right: Spatial distribution in the community. **Source:** Author, 2015;
 using AutoCAD Map 3D 2014 and Google Earth (background reference);
Middle: 'Bubble diagram' analysis of the community, focused on DSI elements. **Source:** see above.



<i>Design elements encouraging social interaction (DSI)</i>			
1) Cars at edge of site + Pedestrian pathways	Yes	5) 'Day uses' of individual properties oriented towards common pathways/ facilities	Yes
2) Common Green	Yes	6) Private courtyards/ decks not fenced (open)	Yes
3) Further Meeting Areas	Yes	7) Central location of Common house and adjacent space	No
4) Clustering some functions to encourage SI (Mailboxes, Laundry, Cooking Lists etc.)	No	8) Fostering Community Identity through Architecture	Yes
<i>Design elements enhancing personal privacy</i>			
9) Buffer zones for individual properties (courtyards/decks)	Yes	10) Possibility for Private access to individual properties (Alternate Route from parking to individual properties)	Part.

Legend:

- Individual Households
- Common House
- Site Perimeter
- Parking Lots
- Open Meeting Places

- Common Green
- Private Courtyards/ Decks
- Pedestrian Pathways
- Main Site Entrance
- Private Access Possibility